

Wear on the end face of the optical module



Overview

Even if a particle is only situated on the cladding or the edge of the endface, it can cause an air gap or misalignment between the fiber cores which significantly degrades the optical signal. A 1-micrometer dust particle on a single-mode core can block up to 1% of the light (a. Optical modules must be handled with standardized procedures during application, as any non-compliant action may cause potential damage or permanent failure. The main reason for the failure of the optical module The main reasons for the failure of the optical module are the performance degradation of the. Modern optical fiber networks have transformed global communications by offering unparalleled bandwidth and low attenuation. This article systematically identifies common anomalies during optical module installation. Combining hardware principles with practical experience, it.

Wear on the end face of the optical module



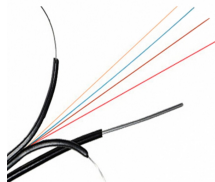
Summary: Dust or chemical contamination at the endface of a fiber optic LC connector or transceiver module impedes signaling. Dell engineering ...



Before touching the optical modules, wear anti-static gloves and anti-static bracelet, and take anti-static measures when installing optical devices (including optical modules).



The optical port of the module is exposed to the environment, leading to dust ingress and contamination. The end face of the fiber optic connector used is already contaminated, causing secondary ...



When cleaning the end face of the ceramic polishing rod with too much force, it may cause scratches on the end face of the ceramic polishing rod. The manual operation of inserting and pulling out the ...



Wear anti-static gloves and shoes when handling optical modules. Moreover, ensure proper grounding and use anti-static packaging during storage and transportation.



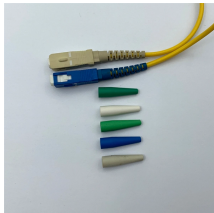
How to effectively protect the optical module from failure is mainly divided into two types: ESD protection and physical protection. ESD damage is a major problem that causes the ...



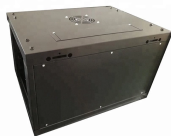
Instead of mating the fiber ends directly, a small lens is used to collimate the light leaving the transmitting fiber. Because the fiber tips do not repeatedly touch, this approach can reduce end-face ...



As core components of optical communication systems, the proper installation and use of optical modules directly impacts network stability. This article systematically identifies common ...



Dust particles trapped between two fiber faces can scratch the glass surfaces. Even if a particle is only situated on the cladding or the edge of the endface, it can cause an air gap or ...



Summary: Dust or chemical contamination at the endface of a fiber optic LC connector or transceiver module impedes signaling. Dell engineering teams have verified cases in which a fully ...



One may need to inspect either bare fiber ends or connectorized fibers. It is common to use various types of fiber endface inspection instruments which are specifically developed to analyze cleaved or ...

Contact Us

For more information, pricing, or custom energy solutions, please contact us:

Website: <https://www.gdroofing.co.za>

Email: sales@gdroofing.co.za

Phone: +27 72 418 9365

Address: 22 Electron Avenue, Isando, Johannesburg, 1600, South Africa

This document is for informational purposes only. Specifications subject to change without notice.

