

Weight of copper plate in distribution box



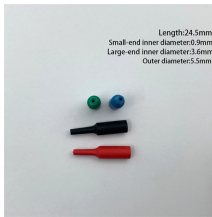
Overview

This tool helps you calculate the weight of copper quickly and accurately by using its dimensions and density. Simply select the shape, enter the size and measurements, and choose the appropriate density range for copper (8.96 g/cm^3 or 8960 kg/m^3). See totals with wastage, plus optional cost breakdown today Reverse mode finds the required length for one piece. Covers all major copper grades — C10100, C11000, C12200 and IS 191 — with kg per metre, kg per piece, total weight and material cost for Indian procurement and fabrication. Copper (chemical symbol Cu) is a reddish-brown.

Weight of copper plate in distribution box



Calculate reliable alloy metal weight estimates with our weight calculator. From aluminium to brass, copper and stainless steel; box sections to sheets, plate, bars, and pipes.



This document provides specifications for copper wire, copper plate, and copper ...



Our copper weight calculator helps you determine the weight of copper products based on dimensions and density. Whether you are working with sheets, rods, or busbars, this tool ensures fast and ...



Calculate the weight of sheet copper, using sheet thickness, sheet dimensions, and number of sheets. The copper weight/thickness chart goes into more detail.



This document provides specifications for copper wire, copper plate, and copper strip patti including the weight in kilograms and grams for different gauges and sizes per 100 meters.



Calculate copper weight instantly for sheets, pipes, rods, bars and strips. Covers all major copper grades — C10100, C11000, C12200 and IS 191 — with kg per metre, kg per piece, total weight and ...



Calculate the weight of sheet copper, using sheet thickness, sheet dimensions, and number of sheets. The copper weight/thickness chart goes into ...



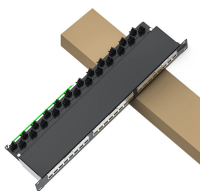
This tool helps you calculate the weight of copper quickly and accurately by using its dimensions and density. Simply select the shape, enter the size and measurements, and choose the appropriate ...



Estimate copper weight for sheets, rods, tubes, wire. Switch units, apply wastage, and price totals fast. Get per-piece results and required length from target weight



Understanding metal weight is essential for accurate planning, budgeting, and material selection across construction, fabrication, and engineering projects. Our calculator simplifies this process by ...



Understanding metal weight is essential for accurate planning, budgeting, and material selection across construction, fabrication, and engineering projects. Our ...



Professional copper weight calculation tools for wires, rods, pipes, cables, strips, coils, and tubes. Get precise weight estimates for your copper projects with industry-standard accuracy and electrical ...



This calculator simplifies the process of calculating the weight of copper plates, which can be especially useful for manufacturers, engineers, and other professionals working with copper ...

Contact Us

For more information, pricing, or custom energy solutions, please contact us:

Website: <https://www.gdroofing.co.za>

Email: sales@gdroofing.co.za

Phone: +27 72 418 9365

Address: 22 Electron Avenue, Isando, Johannesburg, 1600, South Africa

This document is for informational purposes only. Specifications subject to change without notice.

