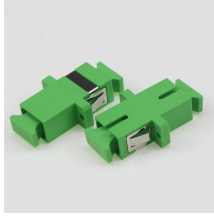


# GDR Telecom Site Energy Systems

## Wellbore Optical Cable



## Wellbore Optical Cable



Weatherford International has been granted a patent for a method of connecting fiber optic cables to downhole gauges in wellbores. The method utilizes a series of nested tubes to protect ...



Provides high-speed data transmission to quickly and efficiently monitor wellbore conditions and prevent equipment failures



Fibercore offers a range of designs for downhole fiber optic cable to meet the specific requirements of your oil or gas well. These types of cables are permanently installed either cemented in behind the ...



Fibre optic installation services are managed by both FCS and third party fibre optic installation contractors. We confirm the wellbore is acceptable for installation prior to moving the cable to the ...



Despite challenges arising from the large borehole diameter and corrosion-resistant alloy casing, the mapping of the fiber optic cable before perforation and the use of the tubing-conveyed ...



We applied the DFOS technique to our field experiments when injecting and extracting fluid from a shallow well. The shallow well was drilled to a depth of 300m and three optical fiber cables ...



CommScope designs and manufactures a comprehensive line of fiber optic cables—from outside plant to indoor/outdoor and fire-rated indoor fiber cables.



Permanent downhole fiber-optic cables are critical infrastructure in wellbore monitoring systems, ensuring reliable transmission of data for applications such as distributed temperature, acoustic, and ...



Each of the one or more fiber optic lines can be coupled to a bridge plug at a first end and coupled to a cable at a second end opposite the first end. The device can include a sleeve covering...

## Contact Us

For more information, pricing, or custom energy solutions, please contact us:

Website: <https://www.gdroofing.co.za>

Email: [sales@gdroofing.co.za](mailto:sales@gdroofing.co.za)

Phone: +27 72 418 9365

Address: 22 Electron Avenue, Isando, Johannesburg, 1600, South Africa

This document is for informational purposes only. Specifications subject to change without notice.

