

## What are the dimensions of a 160p distribution box



## What are the dimensions of a 160p distribution box



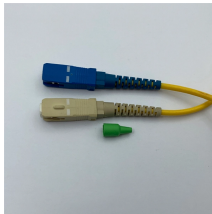
This document provides information on MAS 160 distribution boards, including: - Details on wall mounted (SDX-P and SDX-L) and flush mounted (SDX-I) distribution boards, listing available models with ...



For temperature rise test, a distribution box with all assembly of Isolator / Porcelain cutouts shall be kept in an enclosure such that the temperature outside the box shall be maintained at 50 ° C.



Schneider Electric SEA9BPN16 Acti9 Isobar P White Metal 16 Way Three Phase TPN Type B Distribution Board - Requires Incomer 250A Width: 470mm | Height: 862mm | Depth: 140mm



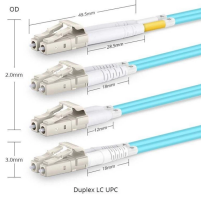
Electrical enclosure sizes are not universal, but most manufacturers follow common size families. This guide explains typical wall-mount and floor-standing dimensions, how to read catalog ...



Electrical enclosure sizes are not universal, but most manufacturers follow common size families. This guide explains typical wall-mount and floor ...



This Acti9 Isobar P B product is a distribution board, up to 250A. (e.g. circuit breakers, Arc fault detection devices, and residual current devices) associated with one or more outgoing circuits fed ...



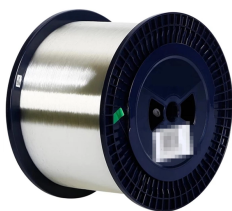
Linkwell offers a wide range of electrical box dimensions, so you can always find the right fit for your industrial or commercial project. Tip: Always measure your space before you install your box.



Product Summary The Generac Portable Power Distribution Box used at events where portable trailers need to be powered, such as golf tournaments, auto races or fairs.



Contains PAC1600 Meter offering Amps, Volts & kWh readout along with appropriate Current Transformers, Mounting Plates & Cable Looms. The latter supplied loose for connection by Installer. ...



DC Micro Style Distribution Boxes Four-pin, One Signal per Port Cable Connector Distribution Box Eight-port DC Micro Distribution Box Specifications

## Contact Us

For more information, pricing, or custom energy solutions, please contact us:

Website: <https://www.gdroofing.co.za>

Email: [sales@gdroofing.co.za](mailto:sales@gdroofing.co.za)

Phone: +27 72 418 9365

Address: 22 Electron Avenue, Isando, Johannesburg, 1600, South Africa

This document is for informational purposes only. Specifications subject to change without notice.

