

What are the functions of a 25G optical module



What are the functions of a 25G optical module



Understand the core function, compare data rates (1G to 25G), learn critical compatibility rules, and follow our 5-step checklist for selecting the perfect SFP optical module for your network build.



25G Optical Modules play a critical role in high-speed interconnects for data centers, enterprise networks, and telecom networks. They provide a single-lane data rate of 25Gbps, forming the ...



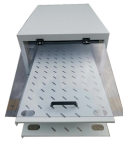
25G multimode optical modules are mainly used for short-distance data transmission, with high transmission rate and cost performance.



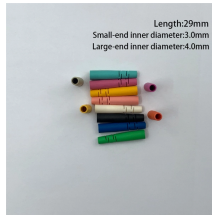
A 25G optical module is a high-speed transceiver used in modern data communication networks to transmit and receive data over fiber optic cables at 25 gigabits per second.



Designed to deliver 2.5× the bandwidth of 10G Ethernet with minimal changes to cabling and infrastructure, 25G optical modules strike the ideal balance between performance, power ...



Explore the distinctions between SFP28 transceivers and legacy modules, focusing on specs, deployment, and selection for modern 25G networks.



Discover the advantages, specifications, and applications of 25G optical transceiver solutions—for high-speed data center, enterprise, and telecom networks.



25G SFP28 DWDM optical modules are mainly used to meet the requirements of 25G Ethernet and 5G fronthaul services, and serve as an effective solution for line bandwidth expansion.



Complete guide to selecting 25G SFP28 optical modules for 5G fronthaul networks. Compare SR, LR, ER, BiDi, and CWDM types covering transmission distance, wavelength, power ...



The 25G SFP28 optical module is an optical module with a transmission rate of 25Gbps. It is a new Ethernet standard with many advantages, mainly used for the interconnection of data ...

Contact Us

For more information, pricing, or custom energy solutions, please contact us:

Website: <https://www.gdroofing.co.za>

Email: sales@gdroofing.co.za

Phone: +27 72 418 9365

Address: 22 Electron Avenue, Isando, Johannesburg, 1600, South Africa

This document is for informational purposes only. Specifications subject to change without notice.

