

## What are the suitable applications for fiber optic patch panels



## What are the suitable applications for fiber optic patch panels



A technical guide on choosing the best Fiber Patch Panel to install & terminate fiber optic cable for any indoor/outdoor industrial communication project.



Proper fiber cable management through a patch panel keeps cables neatly routed and secured, preventing tangling or damage. A professionally arranged fiber optic patch panel also ...



Fiber optic patch cables are pre-terminated with fiber optic connectors on both ends and they are mainly used for indoor applications such as server rooms, data centers, and Cable TV ...



In this article, we'll explore the primary uses and benefits of a fibre optic patch panel, outline the key types available, and help you determine which configuration best suits your network.



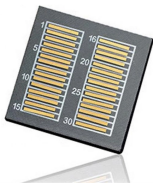
These fiber optic patch panels are typically used in small business or residential applications for 12F to 24F fiber optic connections. They are compact and usually feature a wall ...



In this article, we will explore everything you need to know about fiber optic patch panels, from their components to their applications and installation processes.



A technical guide on choosing the best Fiber Patch Panel to install & terminate fiber optic cable for any indoor/outdoor industrial communication project.



Learn what a patch panel is, the key types (Ethernet, fiber, coaxial), and how to choose the right one. Weunion's expert guide covers features, applications, and more.



Fiber patch panels are essential for present-day data centers and telecommunication networks, which organize fiber optic cables for easy use. Here, you can expect to find a complete ...



The fiber patch panel, also known as an optical distribution frame (ODF), plays a key role in terminating, distributing, and protecting optical fibers. With the rise of high-density data centers ...



Strategic Guide to Selecting a Fiber Optic Patch Panel in 2026 As enterprise networks and hyperscale data centers adapt to the relentless bandwidth demands of AI-driven computing in ...

## Contact Us

For more information, pricing, or custom energy solutions, please contact us:

Website: <https://www.gdroofing.co.za>

Email: [sales@gdroofing.co.za](mailto:sales@gdroofing.co.za)

Phone: +27 72 418 9365

Address: 22 Electron Avenue, Isando, Johannesburg, 1600, South Africa

This document is for informational purposes only. Specifications subject to change without notice.

