

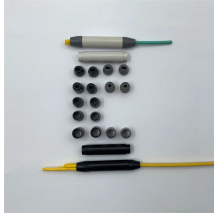
What brands of fiber optic cross-connect boxes are available



Overview

Find your fiber optic junction box easily amongst the 67 products from the leading brands (HUBER+SUHNER, BOPLA, METZ CONNECT.) on DirectIndustry, the industry specialist for your professional purchases. The Super Tap™ series of fiber enclosures provide a plug and play tap designed with IP-68 and GR-771 ratings. Much like our. The box is available. 2 port fiber terminal box. Mexfoserv® demarcation boxes, also known as terminal boxes, integrate FTTX activities into a small and compact wall mount enclosure, providing a safe space to splice, split, distribute, store, and cross-connect fiber optic. Mexfoserv® has a large variety of models available to fit our customers'. FTTX ODN Plug and Play Fiber Access Terminal, indoor/outdoor IFDH 3000 Indoor Fiber Distribution Hub BUDI™ Fiber Optic Wall mount Enclosure, small size (1S) BUDI™ Fiber Optic Wall mount Enclosure, extra small size (2S) BUDI™ Fiber Optic Wall mount Enclosure, FOSC splicing, medium size (M) BUDI™. Fiber Distribution Box are used in cross-connection (indoor and outdoor devices). 288 core catering various optical deployment. All products in this family offer modular design for incremental growth and are ideal as outdoor protected environments for cross-connect installations.

What brands of fiber optic cross-connect boxes are available



Find your fiber optic junction box easily amongst the 67 products from the leading brands (HUBER+SUHNER, BOPLA, METZ CONNECT, ...) on DirectIndustry, the industry specialist for your ...



At Multilink, we offer various closures to meet these needs, including inline types and drop terminals. Whether you need a compact solution or a more robust outdoor fiber-optic splice enclosure, we've ...

Rear of the optical fiber distribution box



Fiber Distribution Box & Terminal Box manufacturer. Fiber Distribution Box are used in cross-connection (indoor and outdoor devices). They are available in ...



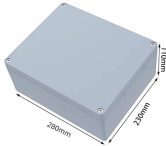
Fibconet offers a range of fully-enclosed fiber optic cross connect cabinets designed to meet your business and budget requirements while ensuring optimal performance for your ...



CommScope wall boxes offer efficient fiber connectivity. Easy installation, versatile sizes, and superior cable management.



Want to know how our major brands manufacture their products? Get all the information about our fiber optic cable, metal stamping, plastic injection, and fiber optic assemblies plants.



The FieldSmart FDH Cross-Connect Cabinet is the complete solution for managing up to 864 fibers in most any feeder/distribution ratio for an outside plant FTTx application. This solution provides an ...



With their termination and cross-connection capabilities, versatility, integration options, scalability and enhanced security, they provide a reliable and cost-effective solution for managing and expanding ...



Fiber Distribution Box & Terminal Box manufacturer. Fiber Distribution Box are used in cross-connection (indoor and outdoor devices). They are available in 8.12.16.24.48.144.288 core catering various ...



This modular system makes it possible to create fiber optic configurations for outdoor applications. All OCC cabinets accept Eclipse®, FDC® and LDC connector module housing units for installations ...

Contact Us

For more information, pricing, or custom energy solutions, please contact us:

Website: <https://www.gdroofing.co.za>

Email: sales@gdroofing.co.za

Phone: +27 72 418 9365

Address: 22 Electron Avenue, Isando, Johannesburg, 1600, South Africa

This document is for informational purposes only. Specifications subject to change without notice.

