

What cable tray should be used for wiring in Huijue distribution boxes



What cable tray should be used for wiring in Huijue distribution box



Selecting the right cable tray is essential for safety, efficiency, and compliance with industry standards. This guide will help you choose the best cable tray solutions for your needs.



In this guide, I'll walk you through everything you need to know about choosing the right cable trays for your cables. Whether you're dealing with power cables, control cables, or ...



Solid-bottom Cable trays for fiber-optic cable installations where drooping of cables may affect system performance, solid-bottom (non-ventilated) cable trays are preferred.



Wire mesh cable trays—often called basket trays—are constructed from welded steel wire, forming a lightweight open-grid structure. Unlike traditional formed trays, wire mesh trays rely ...



Cable trays do not fully enclose the wires inside them. If you go with trays, you'll need cables that have high fire resistance, tensile strength, and positive results from crush and impact ...



If your current trays can't handle Cat8's 2000MHz bandwidth or 40kW/m² thermal loads, it's time. Remember that one properly installed cable management tray prevents 80% of pathway congestion ...



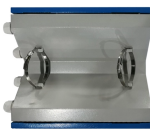
The wire mesh cable tray, also known as a basket cable tray, is constructed using welded steel wires that form a mesh-like, open structure. This design is especially popular in data centers and ...



Choose from our selection of cable trays, including over 850 products in a wide range of styles and sizes. Same and Next Day Delivery.



Electric cable trays, often made from robust materials such as galvanized or stainless steel, are ideal for industrial environments where durability and protection against corrosion are ...



This article explains the main requirements and good practices for cable tray systems, including tray types, materials, loading, supports, bonding, cable selection, and installation details.

Contact Us

For more information, pricing, or custom energy solutions, please contact us:

Website: <https://www.gdroofing.co.za>

Email: sales@gdroofing.co.za

Phone: +27 72 418 9365

Address: 22 Electron Avenue, Isando, Johannesburg, 1600, South Africa

This document is for informational purposes only. Specifications subject to change without notice.

