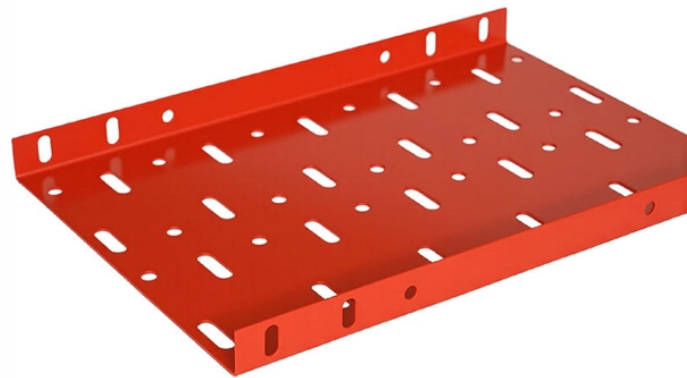


What is DDM Digital Module Demographics



Overview

DDM provides real-time monitoring of the optical module's key parameters, such as temperature, voltage, and optical power. This information is transmitted over the module's I2C bus and can be read using a compatible host device. Digital Diagnostics Monitoring (DDM), also known as Digital Optical Monitoring (DOM) or Diagnostic Monitoring Interface (DMI), is a standardized feature defined by SFF-8472 that allows network devices to monitor real-time optical transceiver parameters such as temperature, voltage, transmit power. Digital Diagnostic Monitoring (DDM), also commonly called Digital Optical Monitoring (DOM), is the standardized capability inside modern optical transceivers that reports the module's internal operating state back to the host system in (near) real time. Below. Diagnose fiber link faults using DDM data. What is DDM?

DDM (Digital Diagnostic Monitoring), also known as DOM (Digital Optical Monitoring), is a built-in monitoring feature in SFP, SFP+, and QSFP optical modules.

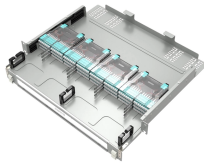
What is DDM Digital Module Demographics



Digital Diagnostic Monitoring (DDM), also known as Digital Optical Monitoring (DOM), is a key feature in modern optical transceivers. It allows real-time monitoring of important operational ...



Understand what DDM/DOM means in optical transceivers, how it monitors temperature, voltage, and optical power, and why it's crucial for reliable fiber networks.



Digital Diagnostics Monitoring (DDM), also known as Digital Optical Monitoring (DOM), represents a critical advancement in optical networking ...



What is DDM/DOM? Digital Diagnostic Monitoring (DDM), also known as Digital Optical Monitoring (DOM) is a feature of network transceivers defined by the SFF-8472 Multi-Source ...



Digital Diagnostics Monitoring (DDM), also known as Digital Optical Monitoring (DOM), represents a critical advancement in optical networking technology.



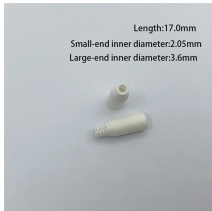
What is DDM? DDM (Digital Diagnostic Monitoring), also known as DOM (Digital Optical Monitoring), is a built-in monitoring feature in SFP, SFP+, and QSFP optical modules.



DDM, also frequently referred to as DOM (Digital Optical Monitoring), is an industry-standard technology defined by the Multi-Source Agreement (MSA) SFF-8472. It provides a real-time ...



Digital Diagnostics Monitoring (DDM) is a feature used in optical transceiver modules that enables you to view real-time information about transceivers, such as optical output and input power.



In simple terms: DDM allows a switch to "communicate" with an optical module to determine whether it is operating normally, degrading, or about to fail. Key Takeaways



DDM provides real-time monitoring of the optical module's key parameters, such as temperature, voltage, and optical power. This information is transmitted over the module's I2C bus ...



Modern optical transceivers support standard digital diagnostics monitoring (DDM) functions, which enable real-time monitoring of modules' parameters. And the DDM information of the modules is ...

Contact Us

For more information, pricing, or custom energy solutions, please contact us:

Website: <https://www.gdroofing.co.za>

Email: sales@gdroofing.co.za

Phone: +27 72 418 9365

Address: 22 Electron Avenue, Isando, Johannesburg, 1600, South Africa

This document is for informational purposes only. Specifications subject to change without notice.

