

What is a drawer-type electrical distribution box



Overview

Drawer-Type Distribution Box: If you're looking for something more modular, the drawer-type distribution box is your friend. With its pull-out drawers, this design makes maintenance and expansion easy. Need to add new components or fix an issue?

Just slide out the drawer! A distribution box, also known as a distribution board, electrical panel, or breaker box, is an enclosure that houses electrical components responsible for distributing electricity throughout a building. It receives power from the main electrical supply and divides it into separate circuits, each. Power distribution box has the characteristics of small volume, simple installation, special technical performance, fixed location, unique configuration function, no site restriction, common application, stable and reliable operation, high space utilization, small land occupation, and environmental. Application Needs: Use drawer type for critical motor protection circuits and fixed type for high power distribution applications. It is commonly used in homes, businesses, and industrial settings to control and protect electrical circuits. What is the distribution box?

A. What is an Electrical Distribution Box?

Panel Types Explained If you've ever opened that gray metal box on your wall to flip a tripped breaker, you've encountered an electrical distribution box.

What is a drawer-type electrical distribution box



Learn what a distribution box is, its types, and how to choose the right one for your project. Includes clear examples and expert tips.



A Temporary Power Distribution Box or power distro box is a type of electrical device that serves as a portable distribution box. It is designed to split electrical power from one source to ...



This ultimate guide explains what a distribution box does, its internal components, common types, real-world applications, and how to select the right DB Box for your project.



☐☐ Drawer Type Distribution Power Box. This kind of switch cabinet is made of closed-shell made of steel plate, and the electrical components of the incoming and outgoing circuit ...



An electrical distribution box combines two essential elements: a distribution system and a protection system. Think of it like a car with both acceleration (distribution) and brakes ...



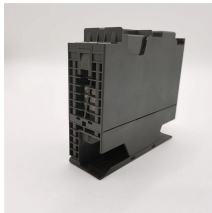
Best suited for high current circuits with stringent electrical connection requirements. Preferred in settings where maintenance teams have substantial experience. When choosing between fixed and ...



This guide explores control panels, electrical boxes, breaker panels, bus bars, junction boxes, and custom enclosures to help you understand their sizes, types, and common applications.



Learn about distribution boxes, their types, functions, and safety features to ensure efficient and secure electrical power distribution in any building.



Drawer-Type Distribution Box: If you're looking for something more modular, the drawer-type distribution box is your friend. With its pull-out drawers, this design makes maintenance and ...



What's the difference between a distribution box and a sub-panel? A distribution box typically refers to the main electrical panel that receives power from the utility service. A sub-panel is ...

Contact Us

For more information, pricing, or custom energy solutions, please contact us:

Website: <https://www.gdroofing.co.za>

Email: sales@gdroofing.co.za

Phone: +27 72 418 9365

Address: 22 Electron Avenue, Isando, Johannesburg, 1600, South Africa

This document is for informational purposes only. Specifications subject to change without notice.

