

What is the ODF in the optical distribution box



Overview

An Optical Distribution Frame (ODF) is the central hub of your fiber optic network. This complete guide explores everything you need to know about ODFs — from their structure, types, and key components, to installation best practices and modern design trends. Whether you're building a central office, data center, or FTTx distribution network, understanding the right ODF. In the complex architecture of fiber optic networks, the Optical Distribution Frame (ODF) serves as the linchpin for organizing, protecting, and distributing optical signals.



What is the ODF in the optical distribution box



ODF, also known as optical distribution frame or fiber optic patch panel, is a critical device used in optical communication for managing and distributing optical fibers. It is usually a ...



An ODF, or Optical Distribution Frame, which is also known as a fiber optic patch panel, is a kind of structure that comprises components for fiber splicing, termination, interconnection, and ...



An Optical Fiber Distribution Frame (ODF) is a core physical connection and management device used in optical communication networks for fusion splicing, jumpers, fixation, ...



An Optical Distribution Frame is not just a passive component, it is the centralized optical management platform that determines the scalability, reliability, and maintainability of fiber networks.



An optical distribution frame (ODF) is a central hub in fiber optic networks, crucial for managing and organizing fiber optic cables and connections. ODFs are designed to provide high-density fiber ...



An Optical Distribution Frame (ODF) is a dedicated unit designed to organize, terminate, and interconnect fiber optic cables. It brings together fiber splicing, patching, and cable routing in a ...



An Optical Distribution Frame (ODF) is a dedicated unit designed to organize, terminate, and interconnect fiber optic cables. It brings together fiber ...



An Optical Distribution Frame is not just a passive component, it is the centralized optical management platform that determines the scalability, ...



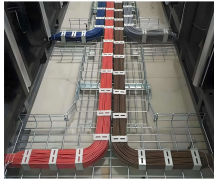
An Optical Distribution Frame (ODF) is an intelligent device in the fiber optic network that helps to organize and manage optical cables. It serves as ...



An Optical Distribution Frame (ODF) is the central hub of your fiber optic network. It manages the connection, splicing, and distribution of optical signals in a single location.



An Optical Distribution Frame (ODF) is an integrated unit used to manage cable interconnections between communication facilities. It serves multiple purposes, including the ...



In the complex architecture of fiber optic networks, the Optical Distribution Frame (ODF) serves as the linchpin for organizing, protecting, and distributing optical signals.



An Optical Distribution Frame (ODF) is an intelligent device in the fiber optic network that helps to organize and manage optical cables. It serves as a merging point for the optical fibers, ...

Contact Us

For more information, pricing, or custom energy solutions, please contact us:

Website: <https://www.gdroofing.co.za>

Email: sales@gdroofing.co.za

Phone: +27 72 418 9365

Address: 22 Electron Avenue, Isando, Johannesburg, 1600, South Africa

This document is for informational purposes only. Specifications subject to change without notice.

