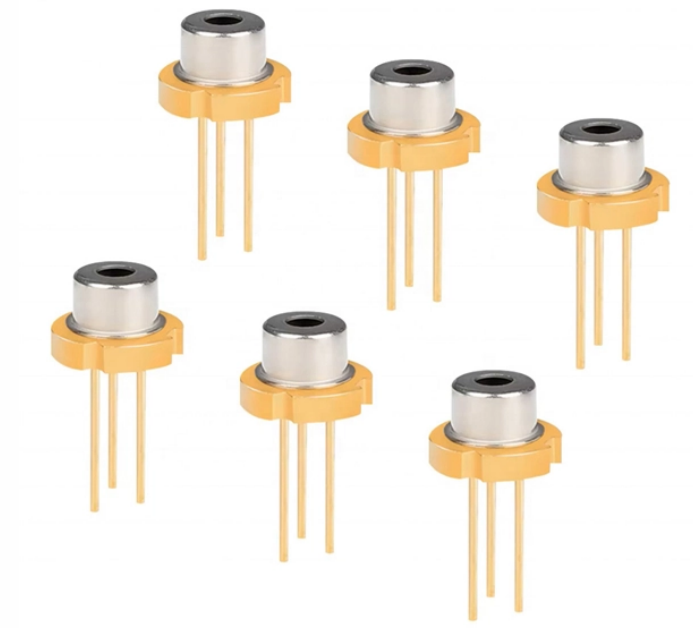
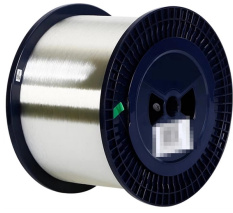


What is the density of galvanized cable trays



What is the density of galvanized cable trays



It is a system that facilitates the transportation of cables and ensures that they are neatly arranged according to cable density. Cable trays, available in hot-dip galvanized, pre-galvanized, stainless ...



We calculate cable tray weight using the formula: $\text{Volume} \times \text{Material Density}$. For accurate results, use our cable tray weight calculator which considers tray dimensions, material type, and coating ...

An Extensive Library of Self-Developed Products



The document provides a technical data sheet for cable trays including ladder and perforated types. It lists specifications for material, thickness, dimensions, loading capacity, fittings and accessories.



Hot-dip galvanized (EN ISO 1461) DG (dipped-galvanised) Whenever cable support systems are exposed to the elements and/or caustic substances (such as petrochemical applications), they are ...



SINGLE PRINT C2C STANDARD PERFORATED CABLE TRAY Suitable for power and data cable routing in indu. trial, commercial, and infrastructure projects. Manufactured from high-quality GI, Hot ...



Carbon steel cable trays intended for installation in corrosive or highly corrosive environments with severe alkaline and acidic conditions shall be hot-dip galvanized zinc after fabrication.



Even though a 900 mm wide tray has six (6) times the volume of a 150 mm wide tray, it cannot carry any more cable weight. When piling cable in tray, the required air separation between cables can be ...



Heavy duty cable trays and cable ladders are manufactured from pre-galvanized or hot-dipped galvanized sheet metal, designed to meet ideal environmental ...



Heavy duty cable trays and cable ladders are manufactured from pre-galvanized, electro-galvanized, or hot-dipped galvanized sheet metal, designed to meet ideal environmental working conditions for ...



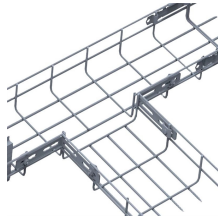
It is assumed that a full cable tray has a cable density of 0.28. kg/cm². Example: The cross-section area of a 50mm x 300mm cable tray (i.e. 5 x 30 cm) is 150 cm². ...



The document provides a technical data sheet for cable trays including ladder and ...



When fitting cable trays and their accessories, the products are cut on site to create changes of direction, adjust sections, etc. Damage can also occur during handling; as a result, both the ...



In this guide, we'll walk you through the step-by-step process for calculating cable tray weight, while providing examples for both channel trays and ladder trays.

Contact Us

For more information, pricing, or custom energy solutions, please contact us:

Website: <https://www.gdroofing.co.za>

Email: sales@gdroofing.co.za

Phone: +27 72 418 9365

Address: 22 Electron Avenue, Isando, Johannesburg, 1600, South Africa

This document is for informational purposes only. Specifications subject to change without notice.

