

What is the size of the base for a 15-meter telecommunications tower



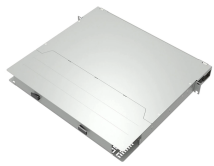
Overview

The bottom diameter/width should not exceed 1800mm and the top diameter / width should not exceed 600mm. A joint in the arrangement should have an overlay. ASMTower has the ability to perform foundation design for telecom structures, including towers and monopoles. The foundation type can be either mat foundation or monopile foundation. User can define the dimensions of the foundations and specifications of the used materials, properties the soil. The AISC method for designing axially loaded base plates defines the critical section as being at the base. The critical section for pipe is defined at a location equal to the diameter. Towers are not rooted by only pouring concrete—they require extensive soil analysis, wind loads, types of towers, and seismic activity to determine the necessary. Telecommunications towers, also known as cell towers or mobile phone masts, are essential for enabling wireless communication services. It is to be a typical design so the bearing strata need to be checked in each case but this whole country is fairly sandy so it's either deep sand or rock.

What is the size of the base for a 15-meter telecommunications tower



Ø Frames for mounting antennas on towers or masts shall be designed upon consideration of the type of tower structure and the type, weight and size of the antenna.



Any new telecommunications tower in excess of 55 meters in height must be located a minimum of one kilometer from any other existing tower in excess of 55 meters in height.



While some testing has been done on smaller pole base plates used in highway construction (usually poles between 10 and 20 inches in diameter), no testing has been done on larger diameter pole base ...



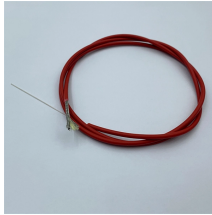
What is Communication Tower Foundation Design?
A communication tower foundation design is the structural blueprint that determines the anchor ...



What is Communication Tower Foundation Design?
A communication tower foundation design is the structural blueprint that determines the anchor point of the tower on the ground.



ASMTower has the ability to perform foundation design for telecom structures, including towers and monopoles. The foundation type can be either mat foundation or monopile foundation.



This case study focuses on the design of a telecom tower foundation using the engineering software program spMats. The tower under study is a 100 ft high and all members are hot-dip galvanized steel ...



I am planning a cruciform base and have tried to do settlement calcs based on assumed minimum SPT values using Burland and Burbridge. However, this gives a large range of results from ...



Guyed serviceable aluminium lattice tower roof mount (210mm Faced). Modular, lightweight 3m sections. Engineer certified to support dish antennas up to 900mm in diameter in 100km/h winds. ...



This document outlines technical specifications for the installation of telecommunications masts and towers. It discusses general principles such as ...



This document outlines technical specifications for the installation of telecommunications masts and towers. It discusses general principles such as types of structures, guidelines, certification ...

Contact Us

For more information, pricing, or custom energy solutions, please contact us:

Website: <https://www.gdroofing.co.za>

Email: sales@gdroofing.co.za

Phone: +27 72 418 9365

Address: 22 Electron Avenue, Isando, Johannesburg, 1600, South Africa

This document is for informational purposes only. Specifications subject to change without notice.

