

What is the voltage of the optical module



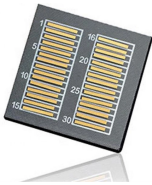
What is the voltage of the optical module



This article explores how the RX/TX power range influences the performance of SFP modules, affecting both transmission distances and optical power budgets. By clarifying these ...



Explore the working principles, structures, and performance metrics of optical modules, essential components of optical fiber communication systems. Learn ...



A practical guide to SFP Optical Module Specifications, covering data rates, optical budget, Tx/Rx power, DDM/DOM, standards, and deployment best practices.



Explore the working principles, structures, and performance metrics of optical modules, essential components of optical fiber communication systems. Learn about key indicators such as average ...



PPC's Transceiver modules are designed for optical communication applications compliant to the IEEE P802.3ba standard. The module converts input channels up to 25Gb/s electrical data to LAN WDM ...



Explore the ultimate guide to optical modules. Learn types, functions, performance metrics & how to choose the right module for your fiber network.



The transmit power of a long-distance optical module is often larger than its overload power. Therefore, when using such optical modules, select optical fibers of an appropriate length to ensure that the ...



Learn how Cisco 400G QSFP-DD High-Power (Bright) Optical module's small size and low power make it an optimal choice for a wide range of DCI/Cloud, metro access/aggregation, ...



Learn how Cisco 400G QSFP-DD High-Power (Bright) Optical module's small size and low power make it an optimal choice for a wide range of ...



This document focuses on projection optical modules that incorporate Texas Instruments' DLP Display chips and are designed to project an image onto a surface for a variety of applications, including ...



The optics module is comprised of Si photodiodes, optical components, and current-to-voltage conversion circuit.



Learn about the TX and RX power of SFP modules, their key parameters, functions, and how to monitor them for stable network performance.

Contact Us

For more information, pricing, or custom energy solutions, please contact us:

Website: <https://www.gdroofing.co.za>

Email: sales@gdroofing.co.za

Phone: +27 72 418 9365

Address: 22 Electron Avenue, Isando, Johannesburg, 1600, South Africa

This document is for informational purposes only. Specifications subject to change without notice.

