

What markings should be added to the distribution box



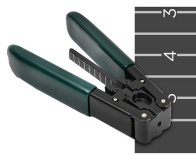
Overview

Labels should be placed where they are easy to see and read. Use clear, contrasting colors and large, legible fonts. Ensure the labels are positioned so that they won't be obscured by dust, moisture, or accidental contact. It is normal to feel unsure about your distribution box. Yet, one of the most overlooked steps in electrical safety and convenience is correctly labeling each circuit breaker. The Ontario Electrical Safety Code (OESC) also requires high voltage systems with the possibility of feedback to have updated single-line diagrams — both at the time of installation and after any modifications (labelling directly impacts safety). When panels and. Accurate electrical panel labeling is essential for the safety and efficiency of any facility's electrical system. When each circuit is clearly marked, maintenance crews, electricians, and even first responders can quickly identify key components during an emergency. The Consequences of Poor or.

What markings should be added to the distribution box



In general, the three most important places to look for electrical panel labeling requirements are the National Fire Protection Association (NFPA), the American National Standards Institute (ANSI), and ...



Electrical panel labeling refers to the systematic identification of each circuit breaker or fuse in your electrical distribution panel with clear, descriptive text that indicates what electrical loads ...



One essential aspect of electrical safety is the proper labeling of industrial electrical and control panels. Proper labeling not only helps prevent accidents but also ensures compliance with different safety ...



Electrical Equipment Did You Know? Proper labelling at all distribution points, circuit breakers, fuses and switches is required during installation, as well as whenever .



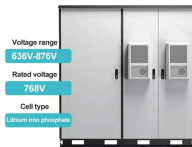
Master breaker box labeling for safer electrical systems. Follow our expert step-by-step guide for efficient troubleshooting and maintenance.



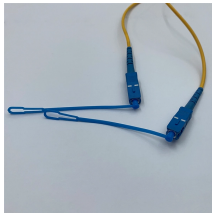
One essential aspect of electrical safety is the proper labeling of industrial ...



Clarity and Specificity: Labels must clearly and specifically describe the purpose or use of each circuit, including spare positions that have an unused overcurrent device. This specificity helps ...



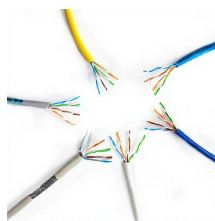
Labeling electrical panels correctly is a crucial aspect of electrical safety. Properly labeled electrical panels make it easier for electricians to identify circuits, manage electrical systems, and respond ...



Follow these steps to ensure your panels are accurately and safely labeled: 1. Identifying Circuits: Start by turning off the power to the panel and methodically testing each circuit. Identify the function of ...



Understand your distribution box labels to identify circuits, improve safety, and troubleshoot electrical issues in your home with confidence.



The electrical panel, or breaker box, is the control center that connects your home to the main power supply and distributes electricity throughout the house. While it may seem intimidating, ...

Contact Us

For more information, pricing, or custom energy solutions, please contact us:

Website: <https://www.gdroofing.co.za>

Email: sales@gdroofing.co.za

Phone: +27 72 418 9365

Address: 22 Electron Avenue, Isando, Johannesburg, 1600, South Africa

This document is for informational purposes only. Specifications subject to change without notice.

