

When the relay protection device operates



Overview

The instant the fault is detected, the protective relay operates to close the trip circuit of the circuit breaker. This results in the opening of the breaker and disconnection of the faulty circuit. : 4 The first protective relays were electromagnetic devices, relying on coils operating on moving parts to provide detection of abnormal operating conditions such as. A protective relay is an intelligent device that senses abnormal electrical conditions, such as overcurrent, under-voltage, or frequency deviations.



When the relay protection device operates



Protective relays and devices have been developed over 100 years ago to provide “lastline” of defense for the electrical systems. They are intended to quickly identify a fault and isolate it so the balance of ...



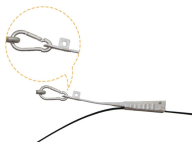
A protective relay operates by continuously monitoring electrical parameters, detecting abnormalities, making decisions, and triggering circuit breakers to isolate faulty sections.



The instant the fault is detected, the protective relay operates to close the trip circuit of the circuit breaker. This results in the opening of the breaker and disconnection of the faulty circuit.



Overcurrent protection devices include fuses, circuit breakers, and surge protectors.



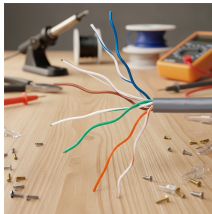
Learn about the protective relay and the technologies behind it. Find out how they detect faults to maintain system integrity and more, [here!](#)



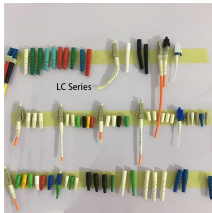
A protective relay is used to protect the device once the fault is detected within a system. Once the fault is detected, the fault location is found and then provides the tripping signal to the circuit breaker or CB.



There are many types of protective relay functions, but this presentation will focus on the most common type, basic overcurrent device 50/51 (instantaneous and time overcurrent).



An overcurrent relay is a type of protective relay which operates when the load current exceeds a pickup value. It is of two types: instantaneous over current (IOC) relay and definite time overcurrent (DIOC) ...



Learn about protective relays, their working principle, types, and applications in power systems. Discover how relays protect transformers, generators, and transmission lines from faults.



Protective relay work as a sensing device, it senses the fault, then known its position and finally, it gives the tripping command to the circuit breaker. The circuit breaker after taking the command from the ...

Contact Us

For more information, pricing, or custom energy solutions, please contact us:

Website: <https://www.gdroofing.co.za>

Email: sales@gdroofing.co.za

Phone: +27 72 418 9365

Address: 22 Electron Avenue, Isando, Johannesburg, 1600, South Africa

This document is for informational purposes only. Specifications subject to change without notice.

