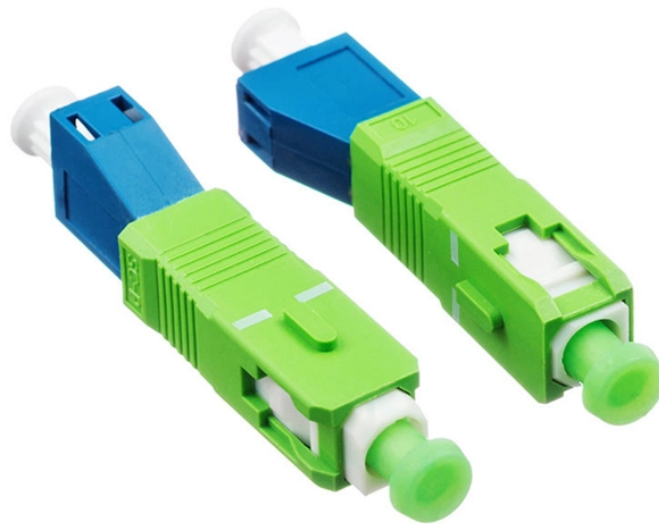


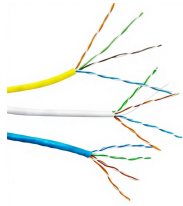
Where can I find the model number of the optical module



Overview

Execute the command "show interface interface-type interface-number transceiver" to view the basic information of the optical module on the interface. Knowing how to view SFP module details helps network engineers verify installation, monitor performance, troubleshoot issues, and maintain. Execute the following command to view detailed interface and optical module status: show interface <interface-type> <interface-number> The output includes interface rate, module type, link state (UP status is required for normal module operation), and traffic statistics, all of which assist in. An SFP module is a hot-swappable transceiver that converts electrical signals into optical (or electrical, in copper variants) signals. It enables flexible connectivity between networking devices and supports different speeds, wavelengths, and distances. Most Cisco optics also support Digital. When the optical module on an interface is faulty, you can run the display commands to view information about the optical module. Connector Figure 2-63 shows an SFP/eSFP optical module.

Where can I find the model number of the optical module



This article provides instructions on how to view the Optical Module Status on your switch through the Command Line Interface (CLI). The Cisco Small Business Series Switches allow ...



Note: <interface-type> <interface-number> indicates the type and number of the interface where the optical module is installed. You can first run the following command to view interface ...



The output of this command is module identification information, including module type, model, serial number, etc. The MELLANOX certified module vendor will be displayed as Mellanox.



Run the display transceiver diagnosis interface [interface-type interface-number] command to view diagnostic information about a specified optical module. This command displays the digital diagnostic ...



Check your device model and software version (show version), then consult Cisco's compatibility matrix to choose supported SFP modules matching your network requirements.



Each SFP transceiver module supports the Cisco Quality Identification (ID) feature which allows a Cisco switch or router to identify and validate that the transceiver module is certified and tested by Cisco. ...



For network engineers, knowing how to view and interpret SFP information from the Cisco command-line interface (CLI) is essential. By checking module health, compatibility, and digital ...



If you know the model or type of an optical module, you can view the section "Pluggable Modules for Interfaces" in the Hardware Description to look up parameters of the optical module, including the ...



Discover how to view the serial number of an optical module with step-by-step guidance from Huawei Technical Support.



Optical modules are widely used in switches, network interface cards (NICs), routers, and other communication devices. During use, reading optical module information helps understand its real ...

Contact Us

For more information, pricing, or custom energy solutions, please contact us:

Website: <https://www.gdroofing.co.za>

Email: sales@gdroofing.co.za

Phone: +27 72 418 9365

Address: 22 Electron Avenue, Isando, Johannesburg, 1600, South Africa

This document is for informational purposes only. Specifications subject to change without notice.

