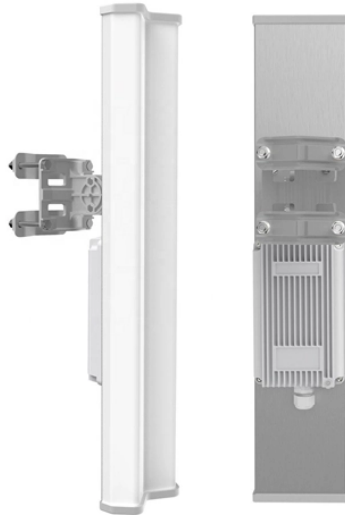
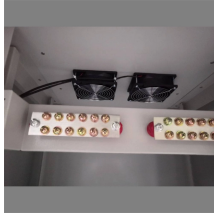


Where is the power distribution box for installing a charging pile



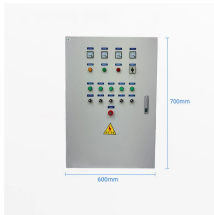
Where is the power distribution box for installing a charging pile



California's 482 cities and 58 counties are responsible for issuing permits for proposed charging stations, following the same processes as other building developments.



Download the guidebook that will help you plan your EV charging project and gain insights on permitting, accessibility and grid connection standards.



EV charging stations are classified as follows:
Level 1 - Uses a standard 120-volt outlet. Level 2 - Uses a 240-volt outlet. Level 3 - Also called DC fast chargers, these use a 480-plug to ...



Plan the installation location of charging equipment. It is recommended to install it near the power distribution room. A distance of at least 1 meter should be left in front and behind the charging pile to ...



In addition to the above subject areas, the guide addresses the construction, commissioning, and installation of stations and looks forward to a California with normalized electric vehicle charging ...



The charging pile box substation is a pre-installed substation customized by the box transformer manufacturer according to the ratio during the installation of the charging pile of the electric vehicle ...



Adapting to the harsh working conditions of outdoor EV charging piles, balancing waterproof, overload protection and anti-aging, ensuring charging safety and equipment service life.



Making sure you have a reliable supply of power for your critical process is one of ABB's main businesses. Our power distribution and switching products ensure power gets to your site and is ...



One promising architecture for extra-large megawatt charging applications is to utilize a solid state transformer with a medium voltage AC input and a DC output for power distribution to the MW ...



Complete EV charger installation guide. Circuit sizing, NEC codes, panel requirements & best practices for residential & commercial EV charging stations.

Contact Us

For more information, pricing, or custom energy solutions, please contact us:

Website: <https://www.gdroofing.co.za>

Email: sales@gdroofing.co.za

Phone: +27 72 418 9365

Address: 22 Electron Avenue, Isando, Johannesburg, 1600, South Africa

This document is for informational purposes only. Specifications subject to change without notice.

