

Where to put the greening distribution box



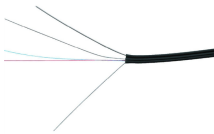
Overview

Never dig near one, and don't plant shrubs or plants within one metre of the box or three metres on the access side of the box which is identified with a padlock. The presence of a sturdy, often green, utility box on private property is a common sight in neighborhoods with underground power and communication lines. These ground-level enclosures are a necessary component of modern infrastructure, delivering essential services directly to the home. These boxes are typically installed by utility companies to house. The green box in your yard is the second-to-last step in a long line of electrical transmission from the utility to your house. Usually connected to underground cables. It can step down the high voltage (7).

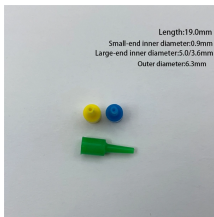
Where to put the greening distribution box



If you don't see any overhead power lines nearby, that green box you're eyeing is what we call a pad-mounted transformer. This transformer plays a crucial role in ensuring that the electricity running ...



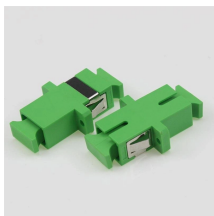
The green box in your yard, known as a pad-mounted transformer, plays a crucial role in the electric power distribution system. Its primary function is to "step down" higher-voltage electricity ...



Never dig near one, and don't plant shrubs or plants within one metre of the box or three metres on the access side of the box which is identified with a padlock. Shrubs and plants will make ...



Electrical transformer boxes, commonly referred to as large green boxes, play a crucial role in modern distribution systems. By stepping down high voltages from power lines, these boxes ensure that ...



Don't try to disguise a transformer box by planting trees or plants in front or around the sides. Leave a 10-foot clearing in the front, and a three-foot perimeter on the other sides so ...



Maintaining a 10-foot clearance around pad-mount transformer boxes is a good guideline. Pad-mount transformer boxes are grounded, so it is safe to occasionally mow or trim any ...



A homeowner who wishes to move a utility box, perhaps for a landscaping project or a new driveway, must submit a formal request to the responsible company. The request should include ...



The green electricity box mentioned above, in which the residential transformer wiring, is the distribution line drawn from the ground and connected to the high and low voltage bushing of the transformer.



Utility companies carefully consider where to place these green boxes within residential areas so they don't detract from curb appeal while remaining accessible for maintenance crews. They're usually ...



The presence of a sturdy, often green, utility box on private property is a common sight in neighborhoods with underground power and communication lines. These ground-level enclosures ...



The green electricity box mentioned above, in which the residential transformer wiring, is the distribution line drawn from the ground and connected to the high ...

Contact Us

For more information, pricing, or custom energy solutions, please contact us:

Website: <https://www.gdroofing.co.za>

Email: sales@gdroofing.co.za

Phone: +27 72 418 9365

Address: 22 Electron Avenue, Isando, Johannesburg, 1600, South Africa

This document is for informational purposes only. Specifications subject to change without notice.

