

## Will the aggregation switch disconnect

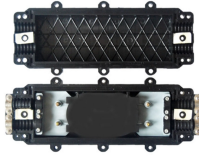


### Overview

In the event of a network failure or link outage, aggregation switches can maintain network functionality by automatically redirecting traffic to alternate paths or backup links. The NVR is connect via Fibre to the USW as well. So. ?

Any hints welcome! Archived post. In addition, core switches are configured with the native AC function to manage APs and transmit wireless service traffic on the entire. Hard restarting the aggregation switch temporarily resolves the issue until it randomly reoccurs. It is essential for larger networks requiring efficient data flow.

## Will the aggregation switch disconnect



A: The primary purpose of an aggregation switch is to connect multiple access switches to a core layer switch, allowing for efficient data flow and network management.



Usually, when the aggregation switch receives data from the access switch, it will perform local routing, filtering, traffic balancing, and QoS priority management. Then it will process the ...



Some time within the last week, the hard-line connections in the office dropped off, possibly after I power cycles the modem. Ever since that time the aggregation switch has been showing offline. I checked ...



What is the difference between an aggregate switch and a core switch? An aggregate switch consolidates traffic from access switches, while a core switch forms the backbone of the ...



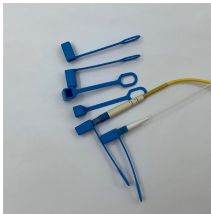
In terms of performance and switching speed, aggregation switches typically outperform access switches. They can route network traffic, implement network security regulations, and add a crucial ...



Clint Bennett Are you sure the downstream switch finishes provisioning before you disconnect it? This is the process I use: Set Aggregation on the downstream switch first and wait for ...



In the event of a network failure or link outage, aggregation switches can maintain network functionality by automatically redirecting traffic to alternate paths or backup links. This ...



An Aggregation or "Top-of-Rack" switch is designed to connect everything in a rack at high speeds, then have an even bigger pipe out to the rest of the network.



Whatever I've tried, the aggregation switch can't be removed despite no devices being connected to it other than its uplink, as it's providing this next hop gateway (10.255.253.2) that is required by the ...



Aggregation switches set up stacks to implement device-level backup and increase the interface density and forwarding bandwidth. Before deploying QoS, ensure that the campus network is connected. For ...

## Contact Us

For more information, pricing, or custom energy solutions, please contact us:

Website: <https://www.gdroofing.co.za>

Email: [sales@gdroofing.co.za](mailto:sales@gdroofing.co.za)

Phone: +27 72 418 9365

Address: 22 Electron Avenue, Isando, Johannesburg, 1600, South Africa

This document is for informational purposes only. Specifications subject to change without notice.

