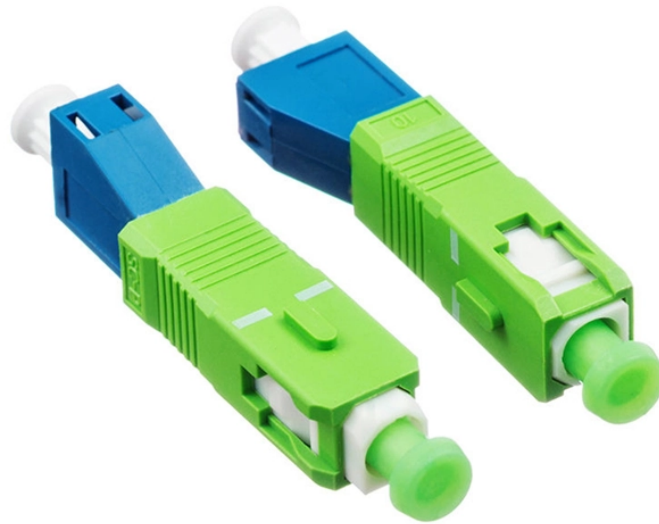


## Wiring Length of Distribution Box



### Overview

In this guide, I'll walk you through a practical, step-by-step process to size your distribution box based on actual load current. Practice good wiring: secure grounding, neat cable management, proper insulation, and correct wire gauge and breaker size. Include protection devices like breakers, fuses, and surge protectors—each circuit should have its own protection. Comply with standards: Follow NEC, IEC, or local codes. Use. Underground wire sizing is very different from indoor runs, as underground circuits tend to run much longer, which makes voltage drop a major concern. Since voltage drop is an issue, the solution is to. Choosing the right electrical junction box size is crucial for safety and code compliance in your US projects. This article mainly talks about the first one.

## Wiring Length of Distribution Box



When the distribution box is installed on the wall, it shall be fixed with split bolts (expansion bolts). The bolt length is generally the sum of the buried depth (75 ~ 150mm), the thickness of the box bottom ...



In this guide, we'll break down everything you need to know to install a distribution box correctly and confidently. Choose the right box based on environment (indoor/outdoor), load ...



The National Electrical Code explains the Maximum Number of Wires that can be installed into a box, otherwise known as Box Fill. This code is based upon the type of box, wires, wire sizes, wire clamps ...



When the distribution box is installed on the wall, it shall be fixed with split bolts (expansion bolts). The bolt length is generally the sum of the buried depth (75 ~ ...



The size of the cable distribution box depends on the number of branch circuits, the size of internal components such as circuit breakers and terminals, and the required wiring space.



Choosing the right electrical junction box size is crucial for safety and code compliance in your US projects. This guide helps you determine the correct dimensions based on wire fill capacity, ...



Wiring Direction: Wiring between the main circuit breaker and each branch circuit breaker in the box generally goes on the left, and the wiring out of the distribution box generally goes on the ...



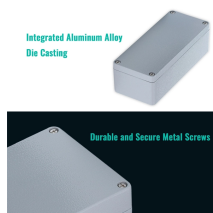
Underground wiring demands more careful sizing than standard indoor circuits. The chart above provides a practical guide to balancing load, distance, and copper/aluminium.



In this guide, I'll walk you through a practical, step-by-step process to size your distribution box based on actual load current. We'll cover everything from understanding your circuits to planning for future ...



Typically, the size of a residential distribution box ranges from 4 to 20 circuits, while commercial and industrial boxes can range from 20 to 40+ circuits. How to Estimate the Size of the ...



Understanding the key components of a distribution box helps you make informed decisions about installation and maintenance. Each element plays a specific role in ensuring safe ...



Choosing the right electrical junction box size is crucial for safety and code compliance in your US projects. This guide helps you determine the correct ...

## Contact Us

For more information, pricing, or custom energy solutions, please contact us:

Website: <https://www.gdroofing.co.za>

Email: [sales@gdroofing.co.za](mailto:sales@gdroofing.co.za)

Phone: +27 72 418 9365

Address: 22 Electron Avenue, Isando, Johannesburg, 1600, South Africa

This document is for informational purposes only. Specifications subject to change without notice.

