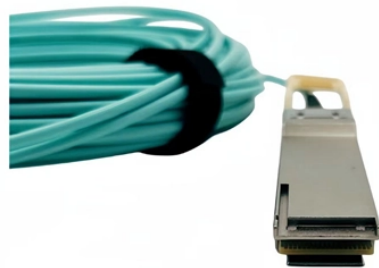


Wiring of Electromagnetic Separator Distribution Box



Overview

Ensure safe placement: install in dry, accessible areas with good ventilation and at appropriate height (typically ~1. This manual applies to the two basic types of Eriez Magnetics SE-2400 electromagnets: chute style and suspended type. A careful reading of these Installation, Operation and Maintenance. Learn how to wire a distribution box step by step! This video shows real on-site footage of electrical installation, demonstrating safe and standardized wiring methods used by professionals. Check for proper IP/NEMA ratings and material quality. Electrical arc vices should use caution when they are around or handling magnets. Avoid electromagnetic influences with the following measures: Separate the cables into relevant cable groups – power cables and signal cables and.

Wiring of Electromagnetic Separator Distribution Box



This manual is a common manual that summarizes the models of multiple electromagnetics separators. Unless otherwise noted, there are no differences in functions, usage, setting and values.



Learn how to wire a distribution box step by step! This video shows real on-site footage of electrical installation, demonstrating safe and standardized wiring methods used by professionals.



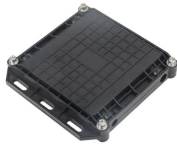
Wiring Direction: Wiring between the main circuit breaker and each branch circuit breaker in the box generally goes on the left, and the wiring out of the distribution box generally goes on the ...



OPTIONAL CONFIGURATIONS Due to the nature of their design, Drum Separators are continuously self-cleaning units. They can be configured as a drum only component, or as a complete unit, ...



The document describes the main components of separators and lists prerequisites for installation like checking coil resistance. Detailed installation steps are provided including mounting the separator, ...



Separate the cables into relevant cable groups - power cables and signal cables and unshielded mains power inputs. Only bundle cables of the same cable group together. Always lay the signal cables at ...



Wiring for Eriez electromagnets is very simple (See Figure 8). Connect the two DC leads from the DC power source to the two terminal posts in the magnet outlet box and tighten the terminal nuts.



Learn how to install a distribution box safely and correctly. Covers wiring, placement, standards, and expert tips for a compliant setup.



It is advisable to connect the probe cables to a cable distribution box which should be fixed near to the top of the separator neck. The probe cable can then be terminated with a waterproof plug (provided ...



Please find the model and serial number for the metal detector, which is located on the backside of the electronic control box cover and or on the outside of the metal detector.



Use these guidelines as a tool for helping avoid potential electromagnetic interference (emi) and transient emi that could cause problems such as “adapter faults, rack faults, communication faults,” etc.

Contact Us

For more information, pricing, or custom energy solutions, please contact us:

Website: <https://www.gdroofing.co.za>

Email: sales@gdroofing.co.za

Phone: +27 72 418 9365

Address: 22 Electron Avenue, Isando, Johannesburg, 1600, South Africa

This document is for informational purposes only. Specifications subject to change without notice.

