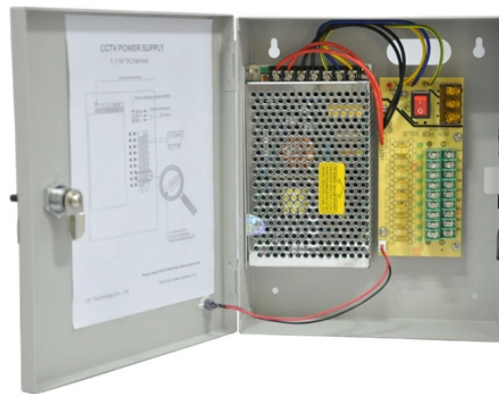


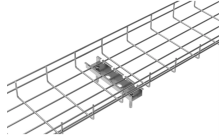
# Wiring of Indoor Electricity Meter and Distribution Box



## Overview

This video illustrates the step-by-step connection from the energy meter (KWH Meter) to the main Double-Pole MCB, the Neutral Link terminal block, and finally to the four individual Single-Pole Miniature Circuit Breakers (MCBs) for distribution to different circuits. This prevents arc faults and ensures safety when modifying or inspecting current paths. Inside the service housing, line conductors from the utility feed typically enter through the top. Understanding how to safely set up the main connections of a home's power distribution system is essential for ensuring reliable and secure operation. It helps the utility company give you the right bill. If you're setting up a new one or replacing an old one, it's important to install it the right way. Installing an electric meter box might seem like a job for professionals only—but with the right knowledge, it's a task many homeowners.

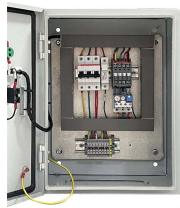
## Wiring of Indoor Electricity Meter and Distribution Box



Learn how to wire an electric meter box with a detailed wiring diagram. Follow step-by-step instructions to ensure a safe and efficient installation.



Watch a simple and clear demonstration of how to wire a basic residential electrical setup.



Clear wiring diagram for residential electric meter box, showing connections, safety components, and layout for accurate installation and maintenance.



Step-by-step guidance on installing an electric meter box safely—site prep, clearances, mounting height, wiring, grounding, permits, and code compliance explained.



Step-by-step guide to installing an electric meter box. Learn safety tips, wiring steps, troubleshooting, and when to call a pro.



The residential electric meter box wiring diagram serves as a blueprint for the “Point of Entry” of your home's electrical system. Visually, the diagram is split into two primary sections: the ...



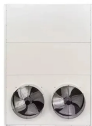
Detailed guide to safely wiring an electric meter box. Covers regulatory compliance, component breakdown, and step-by-step conductor landing.



The secondary distribution available to serve commercial and industrial loads may be a three-wire, single-phase system, three-wire, three-phase system or four-wire, three-phase system.



Learn how to read and understand a wiring diagram from the electric meter to the breaker box in order to troubleshoot and fix electrical problems in your home. Get step-by-step instructions and diagrams for ...



Explore a comprehensive guide to residential electric meter box wiring diagrams, offering clear instructions for safe and efficient installation.

## Contact Us

For more information, pricing, or custom energy solutions, please contact us:

Website: <https://www.gdroofing.co.za>

Email: [sales@gdroofing.co.za](mailto:sales@gdroofing.co.za)

Phone: +27 72 418 9365

Address: 22 Electron Avenue, Isando, Johannesburg, 1600, South Africa

This document is for informational purposes only. Specifications subject to change without notice.

