

Wiring requirements and pricing for household distribution boxes



Overview

This guide focuses on practical cost estimates and per-unit pricing to help homeowners and contractors plan accurately. Typical project ranges include both box costs and. Homeowners typically pay a broad range for electrical box installation, driven by box type, wiring complexity, and local labor rates. Choose the right box based on environment (indoor/outdoor), load capacity, and durability. Check for proper IP/NEMA ratings and material quality. Just like travelers need clear pathways and safety protocols, your electrical circuits need proper management to prevent chaos. The National Electrical Code (NEC) requirements might seem like bureaucratic. In this article, we will explore the specifications for household distribution boxes and provide guidance on how to install them correctly.

Wiring requirements and pricing for household distribution boxes



Key price variables include amperage, panel type, and wiring complexity. Upgrading from 100A to 200A generally adds material costs for a larger enclosure and more conductors, plus ...



Introduction
Understanding The Components of A Distribution Box
Selecting The Right Distribution Box
Site Preparation and Location Requirements
Electrical Connections and Wiring
Compliance with Standards and Regulations
Conclusion
What Is a Distribution Box?
A distribution box, also known as a power distribution unit, is a critical component in any electrical system. It is the control center for electricity in your home or business. It takes the electrical power coming into the building and distributes it to different circuits. Each circuit then powers various device...
Why Proper Installation Matters
Installing a distribution box correctly is about more than just making sure the lights turn on. It's about safety, efficiency, and reliability. A poorly installed distribution box can lead to a host of problems. These include electrical fires, short circuits, and even complete power failures. Proper installation ensures tha...
See more on eabel
Published: Feb 7, 2025
coloriagroup



Installing a household distribution box requires careful attention to specifications and safety guidelines. Understanding these parameters is vital for ensuring the safety and efficiency of ...



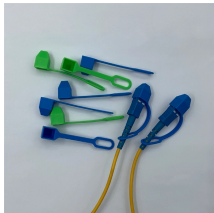
2026 residential electrical panel upgrade costs. Compare 100A, 200A, and 400A service pricing, installation times, ROI, and modern NEC code requirements.



When budgeting for electrical boxes, most buyers look at upfront cost ranges based on box type, material, and installation complexity. The price drivers include box size, material, finish, and labor ...



All pricing information on this page is based on average industry costs, and is subject to variance for project-specific materials, labor rates, and requirements.



The latest NEC updates prioritize adaptive solutions for modern energy demands. With homes now packing solar arrays, EV chargers, and smart-home systems, distribution boxes work harder than ...



Homeowners typically pay a broad range for electrical box installation, driven by box type, wiring complexity, and local labor rates. This guide covers cost, price ranges, and practical budgeting ...



Learn how to install a distribution box safely and correctly. Covers wiring, placement, standards, and expert tips for a compliant setup.



Comprehensive guide to new circuit breaker box costs, including installation prices, safety features, and long-term benefits. Learn about modern electrical system upgrades and smart home integration.



Homeowners typically pay for a distribution box replacement based on box size, amperage, wiring needs, and permit requirements. The price range reflects labor, materials, and ...

Contact Us

For more information, pricing, or custom energy solutions, please contact us:

Website: <https://www.gdroofing.co.za>

Email: sales@gdroofing.co.za

Phone: +27 72 418 9365

Address: 22 Electron Avenue, Isando, Johannesburg, 1600, South Africa

This document is for informational purposes only. Specifications subject to change without notice.

