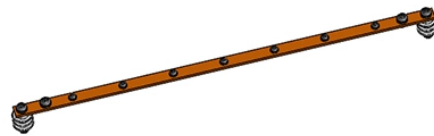


Wiring the power output of the distribution box



Overview

Connect the phase and neutral wires from the input power supply to the input of the Main MCB. more Learn how to wire a distribution box step by step! This video shows real on-site footage of. A distribution board or distribution box is where the main power supply is distributed to multiple loads. If you have just taken delivery of the Power Distribution Box, check the packing list to be sure you received everything that you ordered.



Wiring the power output of the distribution box



In this video, we'll walk you through the process of wiring a home distribution box with a detailed connection diagram. Whether you're an electrician or a DIY enthusiast, this guide will help you ...



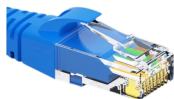
In the power supply box, connect the ground (bare) wire to the green terminal, the red wire to the bottom contact on the breaker, and the black wire to a black negative terminal.



Learn how to wire a distribution box step by step! This video shows real on-site footage of electrical installation, demonstrating safe and standardized wiring methods used by professionals.



Wiring Direction: Wiring between the main circuit breaker and each branch circuit breaker in the box generally goes on the left, and the wiring out of the distribution box generally goes on the ...



Hey, in this article we are going to see the Single Phase Distribution Box Wiring Diagram and Connection Procedure. A distribution board or distribution box is where the main power supply is ...



Find out how to properly wire an electrical panel box with a comprehensive diagram and step-by-step instructions.



The Power Distribution Box wiring must be carried out following the instructions in this instruction manual. Incorrect wiring may result in electric shock and/or fire.



Securely manage job site power. Build a compliant temporary distribution box, detailing component sizing, critical grounding, and wiring integrity.



First of all, you need to have a simple understanding of the definition of a distribution box, and make it clear which kind of distribution box you want to install. This is important to properly install it.



Learn how to install a distribution box safely and correctly. Covers wiring, placement, standards, and expert tips for a compliant setup.

Contact Us

For more information, pricing, or custom energy solutions, please contact us:

Website: <https://www.gdroofing.co.za>

Email: sales@gdroofing.co.za

Phone: +27 72 418 9365

Address: 22 Electron Avenue, Isando, Johannesburg, 1600, South Africa

This document is for informational purposes only. Specifications subject to change without notice.

