

Wiring without busbar



Overview

Using a busbar in a 12V electrical setup has several important benefits: 1. Clean and Organised Wiring Without a busbar, you'd have to stack multiple ring terminals onto one battery post or fuse block. 1973 construction house, all but one of the circuits are bonded via armored cable sheath only, not real copper grounding conductors. ONE Romex circuit - the only one I saw in the house - is fed from this sub panel. A bus bar gives a single source for either negative or positive electrons, saving cable, and allows you to tap the bar for the potential to run multiple devices such as Shunts, Charge Controllers, Inverters, Monitors, etc. Catch, make or grow everything you can. It acts as a central point where multiple circuits can connect, enabling the organised and efficient flow of current within a DC system. Should I bother running two new grounding wires to.

Wiring without busbar



You don't have a ground bus because you don't need one. All existing wiring is in metal conduit, which provides the ground. If you are in a location where local electrical code requires metal ...



Unless local amendments don't permit there are several wiring methods that don't require an EG wire such as EMT, RMC, IMC, FMC, AC, ... If you don't have any EG to land in a panel than ...



Mount a pair of busbars on the outside of that box, connect all the random wiring to them instead of those shoddy-looking four-way things, and run a short link from each busbar to the ...



All the existing white neutral wires and their grounds are connected to one bus bar, which is connected to the ground rod wire. There is no ground bus bar present.



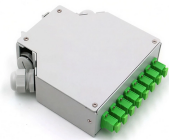
Is it a consensus that I should hire an licensed electrician to UN-bond the existing neutral/ground bus bar and install a separate grounding bar for this detached garage?



So if you're not using a common bus then there are several options. One, is run a separate GEC from each service switch to each electrode (poor choice). Two, run a common GEC to the ...



A bus bar allows you to remove one pack for service easily without affecting any other battery packs while you do so. A bus bar allows a simple way to put a fuse or breaker (or both) ...



See that giant white wire above all those grounds? That's a neutral. Your grounds and neutrals get bonded together at the main service. So yes you have a neutral. The only thing is if you ...



The consumer unit did not have any spare busbar so I used a piece of 6mm insulated cable to link the last mcb with the busbar in to the new mcb. Just wanted to check this is ok?



Without a busbar, you'd have to stack multiple ring terminals onto one battery post or fuse block. This can quickly lead to messy, tangled wiring that's difficult to troubleshoot.

Contact Us

For more information, pricing, or custom energy solutions, please contact us:

Website: <https://www.gdroofing.co.za>

Email: sales@gdroofing.co.za

Phone: +27 72 418 9365

Address: 22 Electron Avenue, Isando, Johannesburg, 1600, South Africa

This document is for informational purposes only. Specifications subject to change without notice.

