

XL-21 Distribution Box Foundation Dimensions



XL-21 Distribution Box Foundation Dimensions



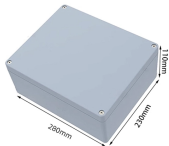
The XL-21 type power distribution cabinet is suitable for power plants and industrial enterprises. It is designed for three-phase three-wire, three-phase four-wire, and three-phase five-wire systems with ...



In addition to the regular stock sizes of the power distribution cabinet, the width (400~1000mm), height (1600~2200mm), and depth (400~800mm) can be adjusted arbitrarily according to actual needs.



Below are the typical dimensions for a standard configuration. This is an example of a single-line diagram (SLD) for an XL-21 power distribution application. We build each cabinet to your project's ...



Below are the typical dimensions for a standard configuration. This is an example of a single-line diagram (SLD) for an XL-21 power distribution application. We build ...



The XL-21 Power Distribution Box is used for power distribution, conversion, transmission, control, and on-site operations in low-voltage distribution systems. It is widely applied in power plants, ...



The XL-21 low voltage power distribution cabinet is suitable for three-phase four-wire systems with AC voltages up to 500V. It is primarily used for power distribution purposes in power plants, industrial ...



The main distribution box adopts self-design of new components, compact structure, beautiful appearance, easy maintenance, a variety of wiring options for users to choose, it is an ideal ...



You can customize the cabinet's dimensions: width (400-1000mm), height (1600-2200mm), and depth (400-800mm). The cabinet uses high-quality electrolytic steel or galvanized steel with a thickness of ...



The XL-21 series power distribution box is one of the widely used power control and distribution equipment in low-voltage distribution systems. Due to its easy installation, flexible use, easy ...



What are the key features of the XL-21 power cabinet? Key features include a compact structure, easy maintenance, flexible wiring options, and a front door equipped with a voltmeter and other measuring ...



This comprehensive guide delves into the specifications and standards of the XL-21 power distribution cabinet, providing valuable insights for engineers, facility managers, and electrical ...

Contact Us

For more information, pricing, or custom energy solutions, please contact us:

Website: <https://www.gdroofing.co.za>

Email: sales@gdroofing.co.za

Phone: +27 72 418 9365

Address: 22 Electron Avenue, Isando, Johannesburg, 1600, South Africa

This document is for informational purposes only. Specifications subject to change without notice.

