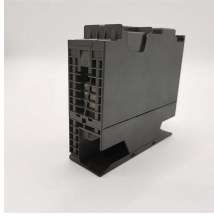


GDR Telecom Site Energy Systems

Xjl distribution box



Xjl distribution box



2013-2015 JAGUAR XJ XJL 3.0L REAR TRUNK
POWER TERMINAL DISTRIBUTION FUSE BOX OEM



The cabin fuse box is located behind the right-hand side trim panel in the footwell. To access the fuse box, pull out the bottom of the trim panel (arrowed), slide the panel down slightly and remove.



Selling a used 2011 Jaguar XJL Rear Trunk Power Terminal Distribution Fuse Box. In Good Condition. Please make sure this is the exact item you need before you buy. If you have any ...



List of elements for Power Distribution Wiring Diagram (2 of 7) for ...



List of elements for Power Distribution Wiring Diagram (2 of 7) for Jaguar XJ 2013: A/c clutch relay Battery (w/ start/stop system) C1dc35 C44-p C4d101a C4dc02e C4dc02f C4dc81a ...



Find many great new & used options and get the best deals for 2013-2015 JAGUAR XJ XJL 3.0L REAR TRUNK POWER TERMINAL DISTRIBUTION FUSE BOX OEM at the best online prices at eBay!



The Power and Ground distribution circuits can be found under section 414-01, BATTERY, MOUNTING AND CABLES.



2010-2015 Jaguar XJ XJL Rear Trunk Power Terminal Distribution Fuse Box 1357 OEM \$16.99 \$19.99 Free delivery



Sell now 2010-2015 Jaguar XJ XJL Rear Trunk Power Terminal Distribution Fuse Box 1409 OEM 997-stgt (982) 99.8% positive

Contact Us

For more information, pricing, or custom energy solutions, please contact us:

Website: <https://www.gdroofing.co.za>

Email: sales@gdroofing.co.za

Phone: +27 72 418 9365

Address: 22 Electron Avenue, Isando, Johannesburg, 1600, South Africa

This document is for informational purposes only. Specifications subject to change without notice.

